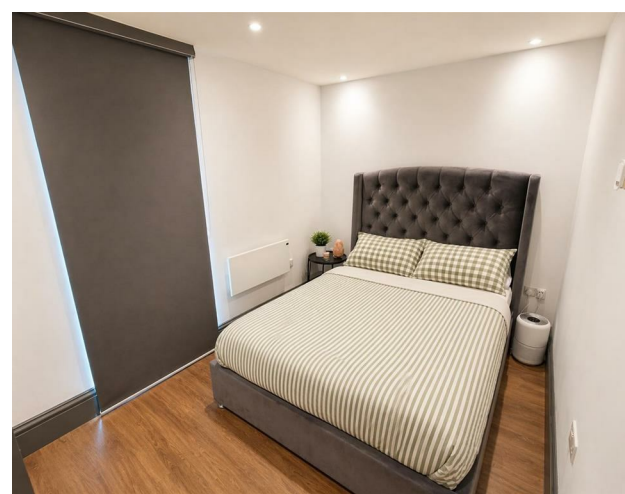


FLAT 16, Greatminster House Lister Hill, Horsforth,
Leeds, LS18 5AZ
£995 Per month

V&L
PROPERTIES



FLAT 16, Greatminster House Lister Hill, Horsforth, Leeds, LS18 5AZ

£995 Per month

Council Tax Band: B

Nestled in the charming area of Lister Hill, Horsforth, Leeds, this purpose-built apartment offers a delightful living space perfect for individuals or couples seeking a comfortable home. The property features a well-appointed reception room that provides a welcoming atmosphere, ideal for relaxation or entertaining guests.

The apartment boasts a spacious bedroom, designed to be a tranquil retreat, ensuring a restful night's sleep. The bathroom is thoughtfully designed, offering both functionality and comfort.

Horsforth is known for its vibrant community and excellent amenities, including local shops, cafes, and parks, making it an attractive location for those who appreciate a blend of urban convenience and suburban charm. With good transport links, residents can easily access the wider Leeds area, enhancing the appeal of this lovely apartment.

This property presents a wonderful opportunity for anyone looking to enjoy a modern lifestyle in a sought-after location. Whether you are a first-time buyer or seeking a rental investment, this apartment is sure to impress.



22 Regent Street
 Leeds
 LS2 7QA
 01133 225737
 info@vgl-properties.co.uk
 vgl-properties.co.uk

Energy Efficiency Rating		
	Current	Potential
<i>Very energy efficient - lower running costs</i>		
(92 plus) A		
(81-91) B		
(69-80) C		
(55-68) D	61	61
(39-54) E		
(21-38) F		
(1-20) G		
<i>Not energy efficient - higher running costs</i>		
England & Wales		EU Directive 2002/91/EC 